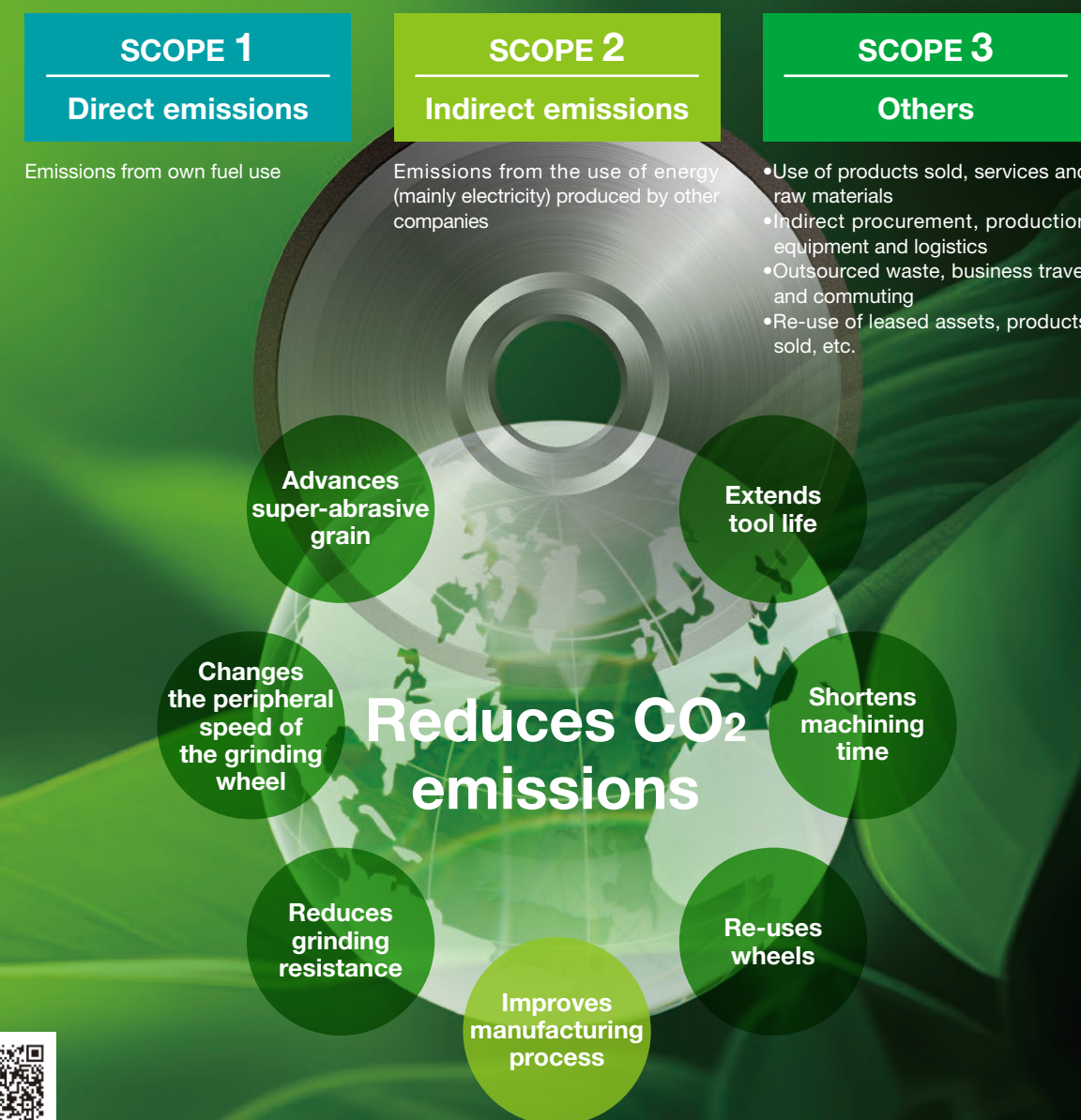


JTEKT GRINDING TOOLS is committed to develop grinding tools reducing CO<sub>2</sub> emissions to realize a sustainable society

### Classification of supply chain emissions as defined by the “GHG Protocol”

- Supply chain emissions: The sum of all emissions associated with business activities
- GHG Protocol: International Standard for Greenhouse Gas accounting and reporting



Scan here for more detailed information on JTEKT GRINDING TOOLS environmental initiatives



Carbon neutral initiative video

### SUSTAINABLE DEVELOPMENT GOALS



Please contact us for any concerns you may have related to grinding, such as equipment, grinding conditions, grinding problems, grinding wheel specifications and dimensions!

Shape precision is not achieved	Wheel life is shortened	Chatter occurs	Want to shorten the machining time
Grinding burns occur	Selection of wheel	Chipping occurs	Poor surface roughness

Grinding professionals will answer any question you may have

**Consult Us on Anything**  
about Grinding and Machining

**0564-48-5314**

Contact us at the number above  
9:00 - 17:00 (except 12:15 - 13:15)  
Monday - Friday  
(Excluding New Year holidays, spring and summer holidays)



### JTEKT GRINDING TOOLS CORPORATION

Head Office • Plant : 1-54 Shiroyama, Maigi-cho, Okazaki City, Aichi Prefecture 444-3594  
TEL 0564-48-5311 FAX 0564-48-5397

East Japan Branch : 7-11-15 Ginza, Chuo-ku, Tokyo 104-0061  
TEL 03-6218-0311 FAX 03-6218-0312

West Japan Branch : 11th Floor, Matsushita IMP Building, 1-3-7 Shiromi, Chuo-ku, Osaka City, Osaka 540-6311  
TEL 06-6942-2160 FAX 06-6942-2161

Hamamatsu Office : 3rd Floor, Hamamatsu JTEKT Building, 224-7 Tamachi, Chuo-ku, Hamamatsu City, Shizuoka Prefecture 430-0944  
TEL 053-450-5020 FAX 053-450-5021

Hiroshima Office : 2-21-22 Shinonome-honmachi, Minami-ku, Hiroshima City, Hiroshima Prefecture 734-0023  
TEL 082-890-0661 FAX 082-890-0660

Fukuoka Office : 4-12-12 Meinohama-eki-minami, Nishi-ku, Fukuoka City, Fukuoka Prefecture 819-0006  
TEL 092-892-3410 FAX 092-892-3420

<https://www.tools.jtekt.co.jp>

Brochure▶  
(English)



小冊子▶  
(中文)



**JTEKT**

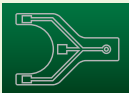
JTEKT GRINDING TOOLS ■ PRODUCT GUIDE

JTEKT GRINDING TOOLS CORPORATION





## Resin Diamond Wheel **Revomate**



Semiconductors Ceramics and semiconductor jigs for surface grinding

Excellent cutting ability and durability enable **shorter cycle time** and **improved dressing intervals**, contributing to improved productivity



Dies & Molds Motor core molds for surface grinding

Excellent cutting ability and durability enable **highly efficient × high-precision machining** of large and complexed shaped molds



### Newly developed binders

- Improved binder retraction
- Improved cutting ability
- Enhanced Abrasive Grain Retention

### Abrasive grains with high toughness

- Improved edge durability
- Sustained cutting ability

### Improved abrasive grain dispersion

- Grinding load uniformity
- Suppression of uneven wear

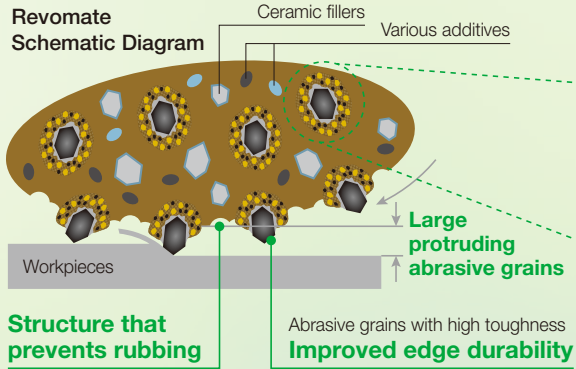


Scan here for more detailed evaluation examples

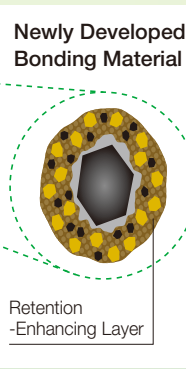


扫一扫这里，了解详细的评估示例

### Revomate Schematic Diagram



### Newly Developed Bonding Material



## Vitrified CBN Wheels **“SAKURA”**



Automobiles Various shafts for outer diameter grinding

Excellent cutting ability and roughness retention enable **shorter cycle time** and **reduces the frequency of truing**, contributing to improved productivity



Machine parts Bearings for internal grinding

Excellent cutting ability and roughness retention enable **shorter cycle time** and **reduced tool costs**, contributing to improved productivity



### Multi-pore structure

- Suppression of heat generation

### High-strength binders

- Suppression of abrasive grain drop
- Suppression of wheel surface changes
- Reduced wheel wear

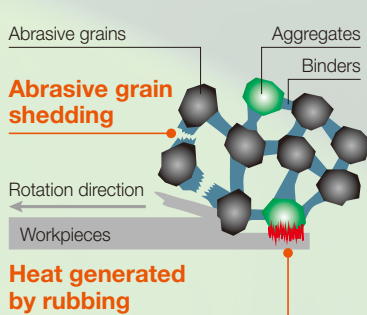


Scan here for more detailed evaluation examples

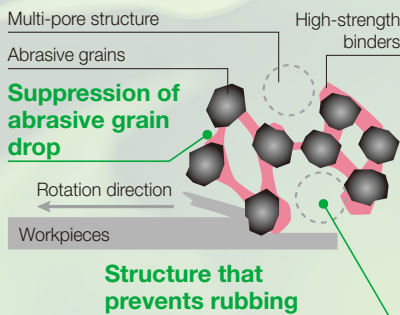


扫一扫这里，了解详细的评估示例

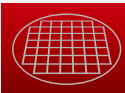
### Conventional product



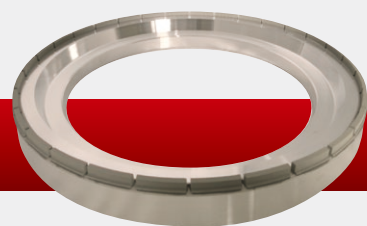
### “SAKURA”



## Vitrified Diamond Wheel **nanoVi®**



Semiconductors Wafers for surface grinding



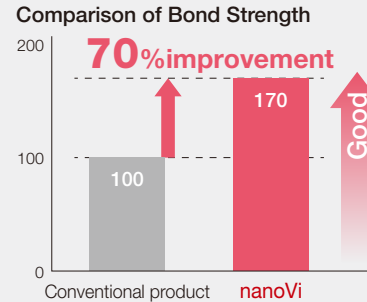
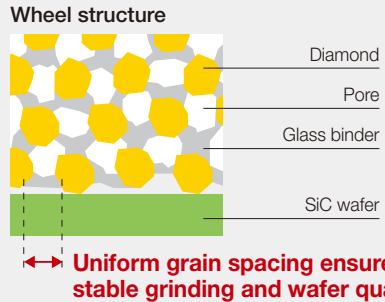
- Rough grinding wheel contributes to **reduced tool costs** by improving abrasion resistance
- Finishing grinding wheel realizes **consistent wafer processing quality** with stable cutting ability

### Uniform wheel structure

- Stable cutting ability
- Stable processing quality

### Glass binder with high strength

- Suppression of wheel wear



Scan here for more detailed evaluation examples



扫一扫这里，了解详细的评估示例

## Resin Diamond Wheel **Teramate Premium**



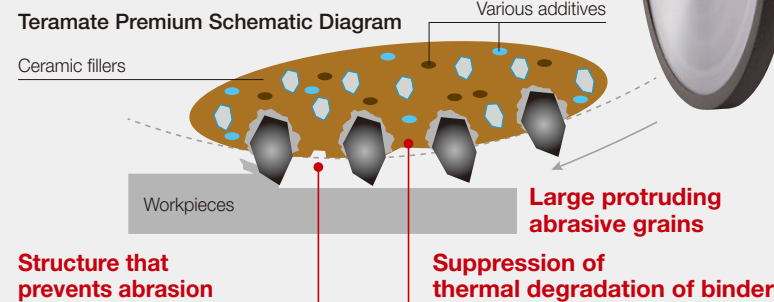
Dies & Molds Ultra-precision molds for surface grinding



High cutting depth contributes to **improved productivity** and supports **mirror machining for precision molds**

### Binder with both cutting ability and abrasion resistance

- Improved cutting ability
- Improved retention of cutting ability
- Suppression of abrasive grain drop due to bonding agent degradation



Scan here for more detailed evaluation examples

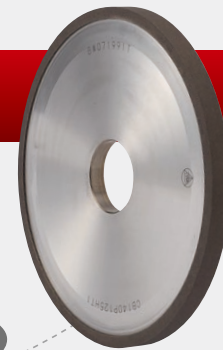


扫一扫这里，了解详细的评估示例

## Metal Diamond Wheel **Teramate MT3**



Tools Tools for flute (groove) grinding



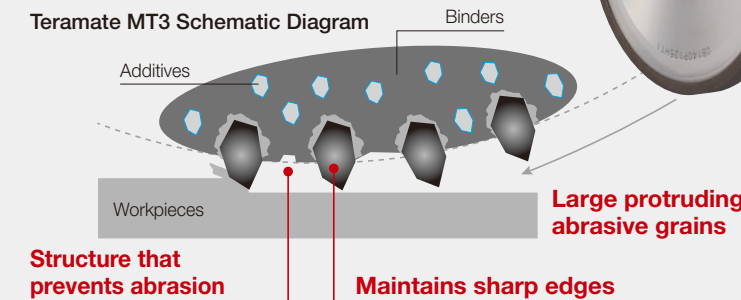
Excellent cutting ability and durability and improved wheel life contribute to **shorter cycle time** and **reduced tool costs**

### Abrasive grains with better crushability

- Improved retention of cutting ability

### Binder with better retraction

- Improved cutting ability
- Suppression of heat generation

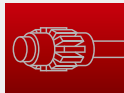


Scan here for more detailed evaluation examples

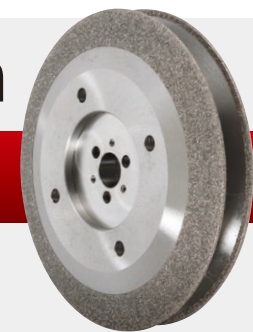


扫一扫这里，了解详细的评估示例

## Diamond Dresser **UP Dresser Premium**



Automobiles For grinding gears



The high-precision shape and high hardness plating with better diamond retention, contributing to **improved gear tooth surface precision** and **longer life time**

### Improved base shape precision

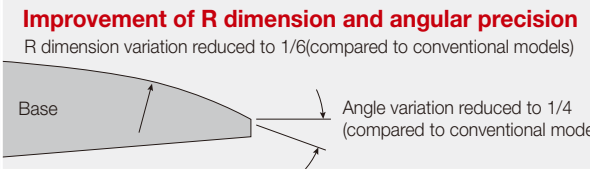
- Higher precision of dresser shape

### High hardness plating

- Improved diamond retention

### Optimization of lapping volume

- Extends life by optimizing diamond working area

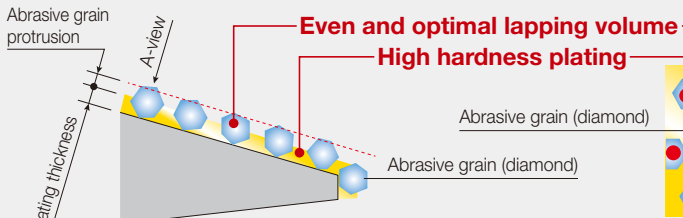


Scan here for more detailed evaluation examples

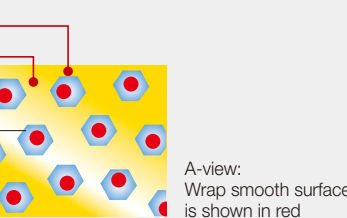


扫一扫这里，了解详细的评估示例

### Dresser Cross-section Schematic Diagram



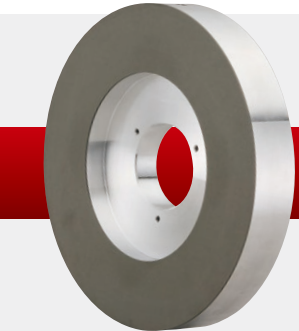
### Dresser Surface Schematic Diagram



## Resin CBN Wheel **Revomate**



Machine parts Bearings, compressor parts, etc., for double-headed surface grinding



Excellent cutting ability and durability enable **stable machining** and the extended tool lifetime contributes to **reduced tool costs**

### Newly developed binders

- Improved binder retraction
- Improved cutting ability
- Enhanced Abrasive Grain Retention

### Improved abrasive grain dispersion

- Grinding load uniformity
- Suppression of uneven wear

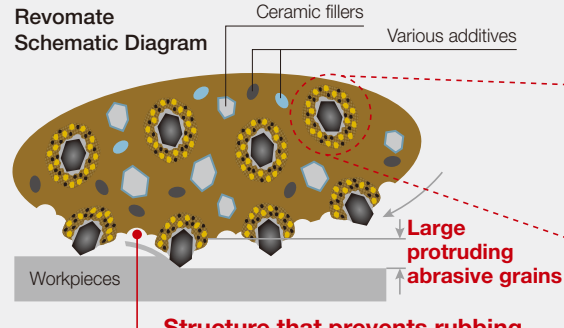


Scan here for more detailed evaluation examples

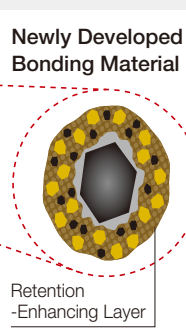


扫一扫这里，了解详细的评估示例

### Revomate Schematic Diagram



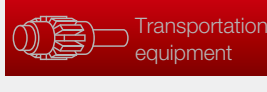
### Newly Developed Bonding Material



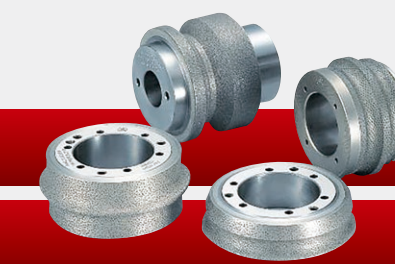
## Rotary Dresser



Machine parts Bearings, ball screws, linear guides, etc.



Transportation equipment Aircraft parts, reduction gear parts, etc.



Select the dresser specifications that best suit your usage conditions from our extensive lineup, which will contribute to **dresser resistance reduction** and achieve **high-precision molding**



Scan here for more detailed evaluation examples



扫一扫这里，了解详细的评估示例